

It's A PIECE OF CAKE!



Figurative language makes conversations more interesting and fun, but it can also be confusing if you take everything literally.

KEY DIFFERENCES BETWEEN LITERALLY AND FIGURATIVELY

- **LITERAL SPEECH** means exactly what it says. Eg: 'It's raining outside' (because, well, it is).
- **FIGURATIVE SPEECH** uses creative language to make a point or comparison. Eg: 'It's raining cats and dogs' (meaning it's raining hard, but not actual cats and dogs).

CHOOSE THE CORRECT MEANING

Read the figurative sentences below and select the correct literal meaning.

- 1 SHE HAS A LOT ON HER PLATE.**

A She is eating a big meal.
B She has many responsibilities.
- 2 THE TEST WAS A PIECE OF CAKE.**

A The test was very easy.
B The test was about baking.
- 3 I AM DROWNING IN HOMEWORK.**

A My homework is piled on me and I am being smothered.
B I have more homework than I can cope with.
- 4 HIS WORDS CUT DEEPER THAN A KNIFE.**

A His words were very painful.
B He used a knife to hurt someone.
- 5 THE CLASSROOM WAS A ZOO TODAY.**

A The classroom had wild animals.
B The students were very noisy and energetic.
- 6 SHE IS A WALKING DICTIONARY**

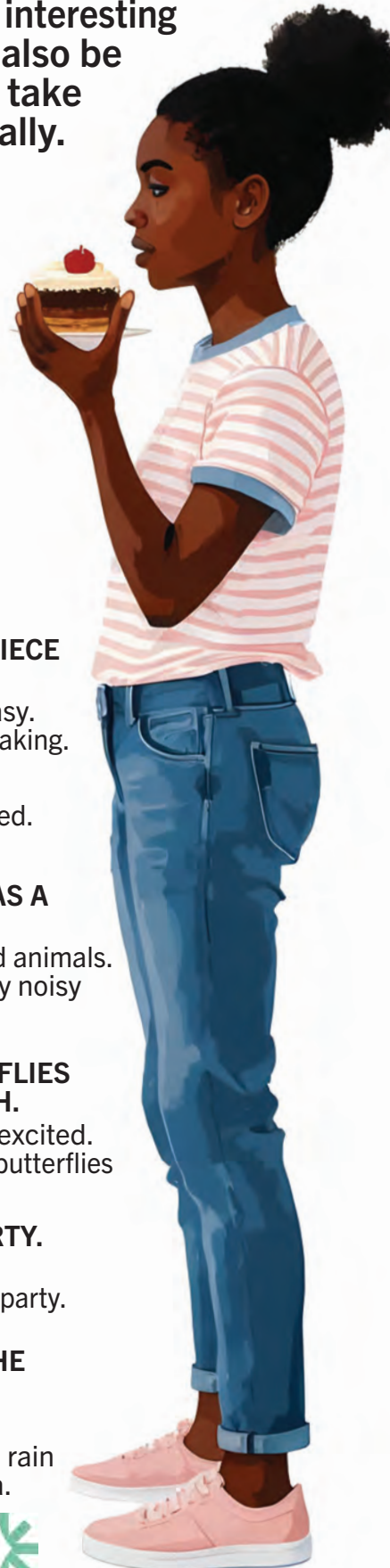
A She has a very large vocabulary.
B She is carrying a load of educational books.
- 7 I HAVE BUTTERFLIES IN MY STOMACH.**

A I feel nervous or excited.
B There are actual butterflies in my stomach.
- 8 SHE FINALLY BROKE THE ICE AT THE PARTY.**

A She broke a piece of ice for her drink.
B She was the first to start a conversation at the party.
- 9 I AM ALL EARS.**

A I'm listening carefully.
B I have exceptionally large ears.
- 10 SHE IS UNDER THE WEATHER.**

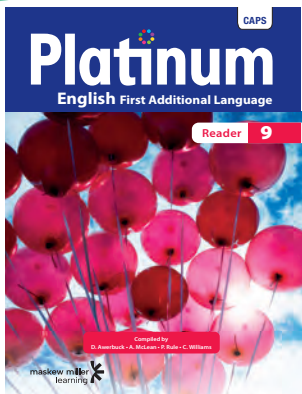
A She feels sick.
B She is caught in the rain without an umbrella.



STOP, SCAN & STUDY!



Scan the QR code & get subject study assistance!



ISBN 9780636144071